



A12 Reconstruction Scheme

In partnership with



Established 1859

Aldham Parish Council Update April 2024

Scheme update

....what's happening next?

- We have now completed our recent overnight closures which were required to switch to the next phase of construction.
- The following phase will involve the reconstruction of the remaining lanes of the southbound carriageway, the J26 entry slip and J25 exit slip
- There will be some weekend lane diversions through the Summer that will enable us to complete works in hard-to-reach areas.
- The final phase of the project will involve the final surfacing of both the northbound and southbound carriageways. We apply the final layer at the end of our improvements to ensure it isn't damaged during the construction phase. This also maximises the life of the road surface and ensures a better quality of finish.
- We are still on track to complete in Summer 2024. Once complete, this important work will extend the life of the road, improve safety, and create smoother, quieter journeys.



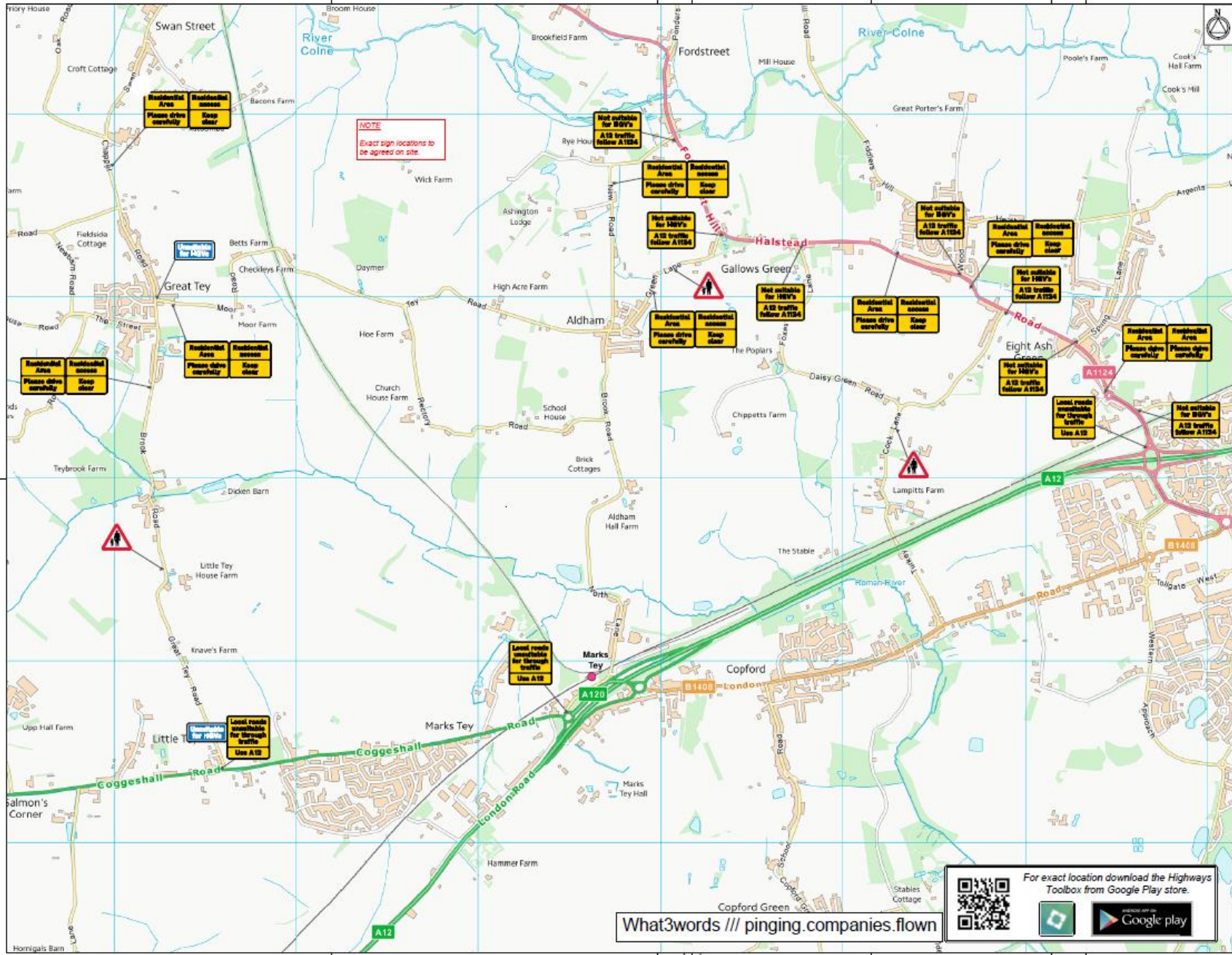
Local road mitigation:

You said, we did...

During our meeting in February 2024, we asked for feedback from local parishes to help enhance our strategy for deterring rat running on local roads. We took this feedback on board and began acting upon these measures straight away.

The following slide shows a map of where the new signage has been installed around the local area...





NOTES

1. Sign locations are indicative only and exact locations need to be agreed on site.

BSV 1	
BSV 2	
BSV 3	
BSV 4	
BSV 5	
BSV 6	
BSV 7	
BSV 8	
BSV 9	
BSV 10	
BSV 11	
BSV 12	
BSV 13	
BSV 14	
BSV 15	
BSV 16	
BSV 17	
BSV 18	
BSV 19	
BSV 20	
BSV 21	
BSV 22	
BSV 23	
BSV 24	
BSV 25	
BSV 26	
BSV 27	
BSV 28	
BSV 29	
BSV 30	
BSV 31	
BSV 32	
BSV 33	
BSV 34	
BSV 35	
BSV 36	
BSV 37	
BSV 38	
BSV 39	
BSV 40	
BSV 41	
BSV 42	
BSV 43	
BSV 44	
BSV 45	
BSV 46	
BSV 47	
BSV 48	
BSV 49	
BSV 50	

Project Name	A31.39620.001
Project Title	A12 Mitigation Signing
Project File	Local Village Detail
Scale	1:1000
Drawn By	JKC
Checked By	JKC
Approved By	JKC
Date	08/08/2018
Revision	001
For Internal Review Comments	

What3words /// pinging.companies.flown

For exact location download the Highways Toolbox from Google Play store.



Local Road Mitigation: Safety Camera Van

We have also increased the presence of our safety camera van in the local area.

Based on feedback from our recent parish council meeting, our team have requested for Brook Road/New Road and Tey Road to be prioritised in Aldham.

Factors that must be considered when identifying suitable locations for the van include:

- Not obstructing other vehicles or accesses
- Being sited a minimum of 1.2m from live traffic
- And ensuring adequate site lines to effectively capture speed





 www.nationalhighways.co.uk

 X (formerly Twitter)

 Instagram

 Facebook