



# A12 Marks Tey to Stanway

Concrete roads reconstruction scheme

Works Update – March 2024

In partnership with



# What have we done so far?

Despite higher-than-average rainfall over the winter months, we've continued to make good progress on the southbound carriageway.

Our recent work has been focused on the removal and reconstruction of the old concrete road and the installation of new kerbing, drainage and central barrier, within lanes 2 and 3 of the southbound section.

We have recycled the old concrete road surface, by reusing the material, along with cement, to form the new foundations we're installing. Alongside this, we've also installed new kerbs, drainage and surfacing.



# What is happening next?

To progress to our next phase of the project - in the coming weeks, we will be making changes to our traffic management which will allow us to undertake work on the remaining lane of the southbound carriageway.

To make these important changes, we'll be carrying out a series of overnight closures on the A12 southbound carriageway between J26 (Stanway) and J25 (Marks Tey) while we switch our traffic management.

These changes will simply mean that traffic will switch over to run in lane three, as we work on the remaining lane of the carriageway and towards completion of the project in summer 2024.

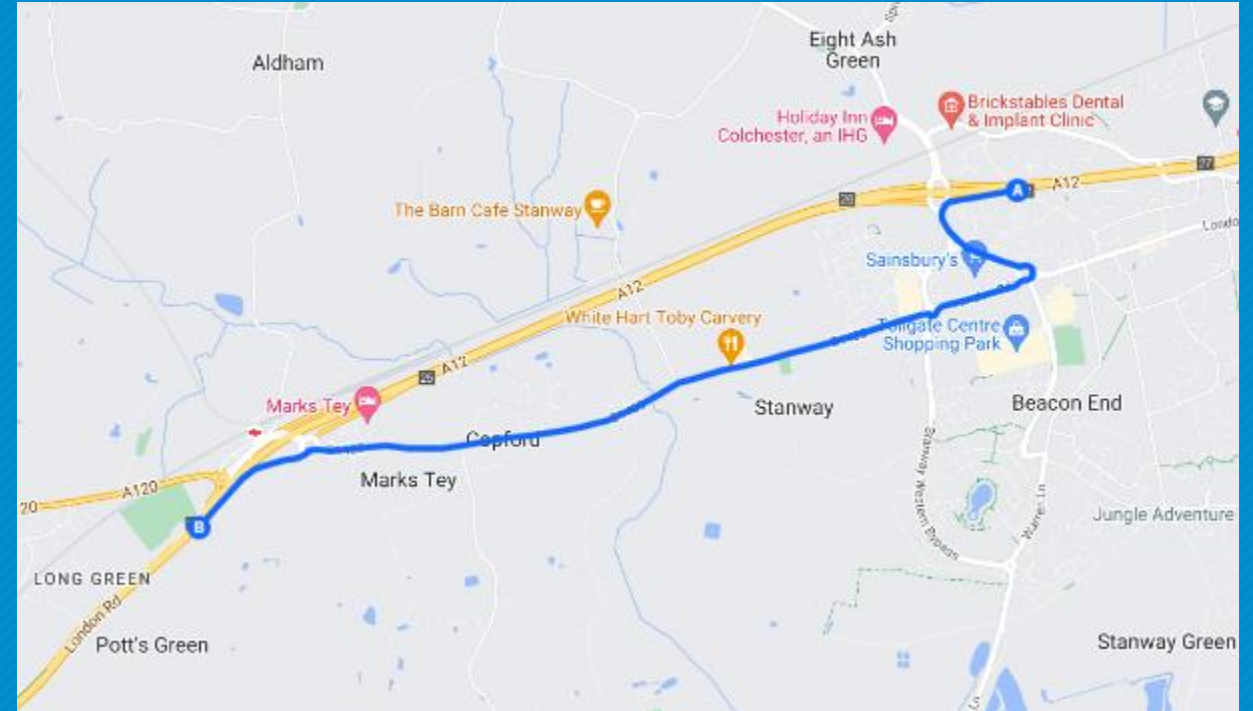
In the summer, once we have reconstructed the southbound carriageway, we'll then begin laying the finished asphalt surface to both the northbound and southbound carriageways. We apply the final surface at this stage to ensure it isn't damaged during the construction phase. This also maximises the life of the road surface and ensures a better quality of finish.

Once complete, this important work will extend the life of the road for up to 40-50 more years, improve safety, and create a smoother, quieter journey for road users

# When is this work happening?

The A12 will be closed southbound overnight between junction 26 Stanway and junction 25 Marks Tey from **8pm** until **6am** each night

Dates of closure	Closure details	Diversion Route
<b>Monday 15 April - Friday 19 April 2024</b>	Full closure of the A12 southbound carriageway between J26 Stanway and J25 Marks Tey	Traffic will exit at J26 Stanway and travel long the A1124, London Road and re-join the A12 at J25 Marks Tey entry slip
<b>Sunday 21 April - Friday 26 April 2024</b>	Full closure of the A12 southbound carriageway between J26 Stanway and J25 Marks Tey	Traffic will exit at J26 Stanway and travel long the A1124, London Road and re-join the A12 at J25 Marks Tey entry slip

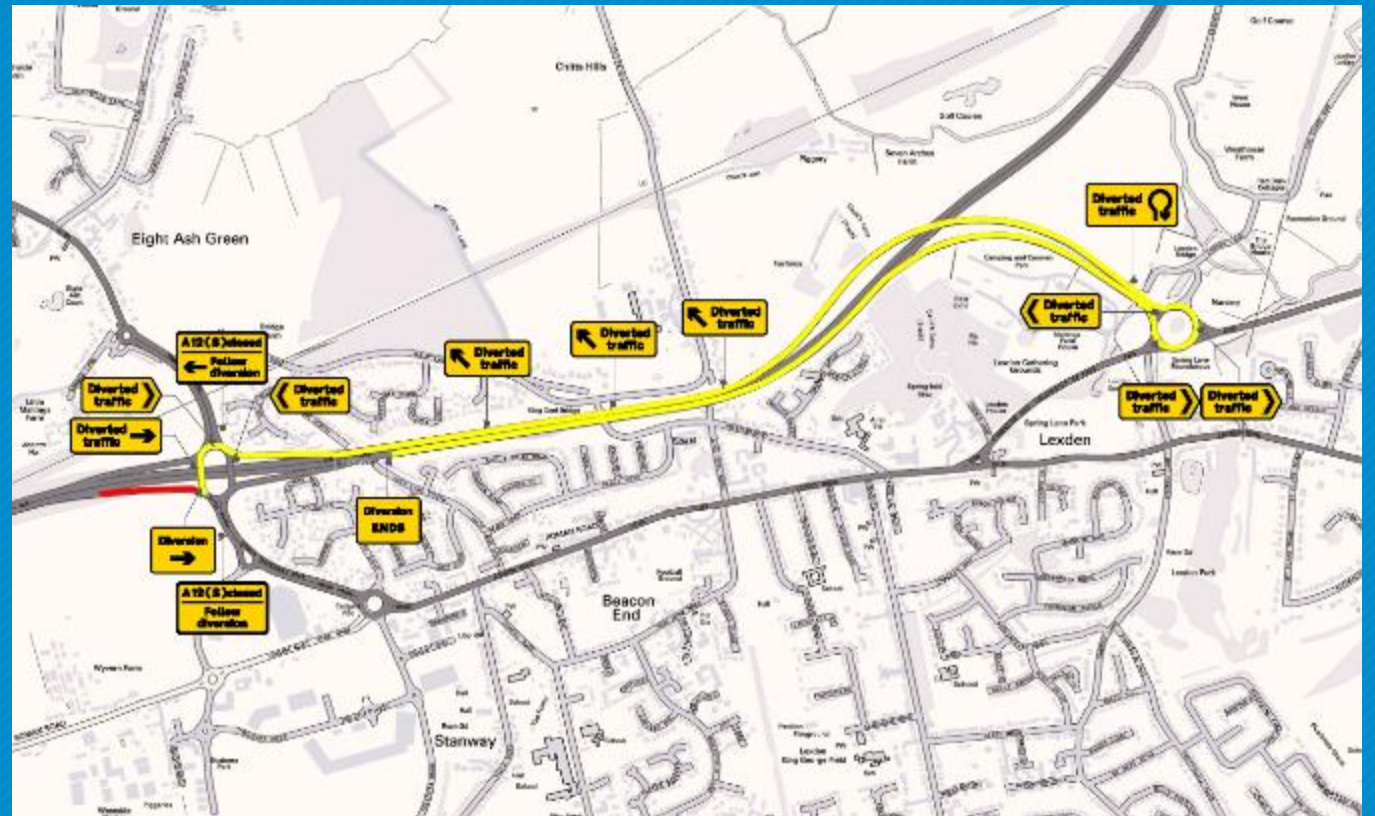


# Slip Road works

Once the traffic management has been switched, we will then commence work to upgrade the slip roads, starting with a temporary full closure of the southbound entry slip road at junction 26.

This work will commence from **Saturday 20 April 2024**, when we will temporarily close the southbound entry slip road at junction 26, for a period of approximately four weeks while we undertake construction works within the slip road carriageway.

During this closure, A12 traffic will be diverted to join the A12 northbound at J26 Stanway, travelling north to J27, and re-joining the A12 southbound at J27 entry slip.



# Weekend works around Junction 25

During our works to the Junction 26 slip road, we will commence work to upgrade the road between Junction 26 and Junction 25.

Our work around Junction 25 is currently being planned over a number of weekends to mitigate the impact on the travelling public and local road network.

Our initial construction activities will take place within an extended safe working area, and the A12 contraflow will remain open but reduced to a single lane.

At the end of the weekend works, in summer 2024, we will need to undertake one full weekend closure of the A12 southbound between junction 26 and 25. This is so that we can undertake the necessary works across all carriageways, which fall outside of our safe

working area.

Our aim is to manage this work so that we're considering the needs of the local community as much as possible. We are currently working closely with Essex County Council, and key stakeholders to avoid impacting on key events in the area and avoid any unnecessary impact on road users.

During full closures, traffic will be diverted along routes that are agreed with Essex County Council as being suitable for the volume and type of traffic.



## Slip Road works continued – Junction 25 exit slip

Our final slip road upgrade will be to the southbound exit slip road at Junction 25.

This work will commence in the summer, after the junction 26 entry slip road works, and will be carefully sequenced around the main carriageway weekend works. This will be undertaken in the same way as the Junction 26 slip road, with a full closure over a period of four weeks.

Understanding the potential inconvenience these closures may cause, we have planned our work on each slip road in a staged manor to minimise disruption and mitigate the impact on the road network.

During full closures, traffic will be diverted along routes that are agreed with Essex County Council as being suitable for the volume and type of traffic.



# Rat running

We're aware of the concerns that have been voiced by local residents regarding some motorists using smaller, local roads during our closures. We are proactively working with Essex County Council, local Parish Councils and Essex Police to consider further actions that can be introduced to prevent speeding and rat running through local villages.

So far, we have responded to feedback by introducing additional signage along various routes, and deploying the safety speed camera van to monitor local routes that are typically used to rat run.





## The road to completion...

In the summer, once the southbound carriageway reconstruction is complete, we'll then begin laying the final asphalt surface layer to both carriageways.

Once complete, this important work will extend the life of the road for up to 40-50 more years, improve safety, and create a smoother, quieter journey for road users.



# Communication channels



Letters and postcards



E-bulletins & Newsletters



Social Media - X (formerly Twitter) and National Highways Regional Facebook



Adverts in local publications



Press releases & Webpage updates



Public Information Events

Kapow - SMS service to advise motorists of any incidents in roadworks



You can sign up for this service by sending your mobile number to: [ConcreteRoadsEssex@nationalhighways.co.uk](mailto:ConcreteRoadsEssex@nationalhighways.co.uk). Please reference the '**A12 Marks Tey to Stanway SMS service**' in the subject line of your email, so it's clear which scheme updates you'd like to register for.

# Any questions?



[www.nationalhighways.co.uk](http://www.nationalhighways.co.uk)



X (formerly Twitter)



Instagram



Facebook