



Welcome to the seventh edition of our newsletter for the A12 junction 25 Marks Tey to junction 26 Stanway concrete road reconstruction scheme.

In this issue we provide an update on the work we've recently completed and what we're doing next.

What have we been doing?

Since our last newsletter, we've completed excavation of lanes two and three of the southbound carriageway. During our reconstruction, we recycled the old concrete by reusing the material, along with cement, to form the new foundations. Alongside this, we also installed new kerbs, drainage and temporary surfacing within this section.

In April, we undertook a series of overnight closures and traffic management changes which enabled us to begin reconstructing the final sections of the southbound carriageway.

These changes signified an important milestone for the project, allowing us to progress into our final stages of work on the southbound carriageway as we work towards completion of the scheme this summer.

We'd like to thank all our customers and local residents for their understanding and patience while we carried out this essential work.



The planer getting ready to begin taking up the old road surface.



Lane two of the southbound carriageway being reconstructed.

All rebuilt sections of carriageway are currently running on a temporary road surface until the final resurfacing is completed at the end of the project. We apply the final road surface at the last stage to ensure it isn't damaged during the construction work. This also maximises the life of the road surface and ensures a better quality of finish. In the meantime, you might experience some unevenness or bumps on the temporary surface.

What are we doing next?

Following our recent traffic management changes, we have now begun reconstructing the final sections of the southbound carriageway.

During this phase we will:

- Reconstruct lane one and hard to reach areas in the southbound carriageway
- Complete reconstruction of the junction 26 southbound entry slip road
- Reconstruct junction 25 southbound exit slip road
- Undertake a series of weekend works around junction 25
- Carry out final resurfacing of both the northbound and southbound carriageways

We have also now commenced our weekend works around junction 25 of the southbound carriageway.

Our first weekend was successfully completed on 18 and 19 May, and saw the team make significant progress with our planned works in hard to reach areas.

We hope the weather continues to be kind to us and allows us to work as successfully through our future weekend dates, and we look forward to bringing you an update on our progress in this area in our next newsletter.

In the meantime, to keep up to date with our work and any unforeseen changes to our schedule, please visit our scheme webpage:

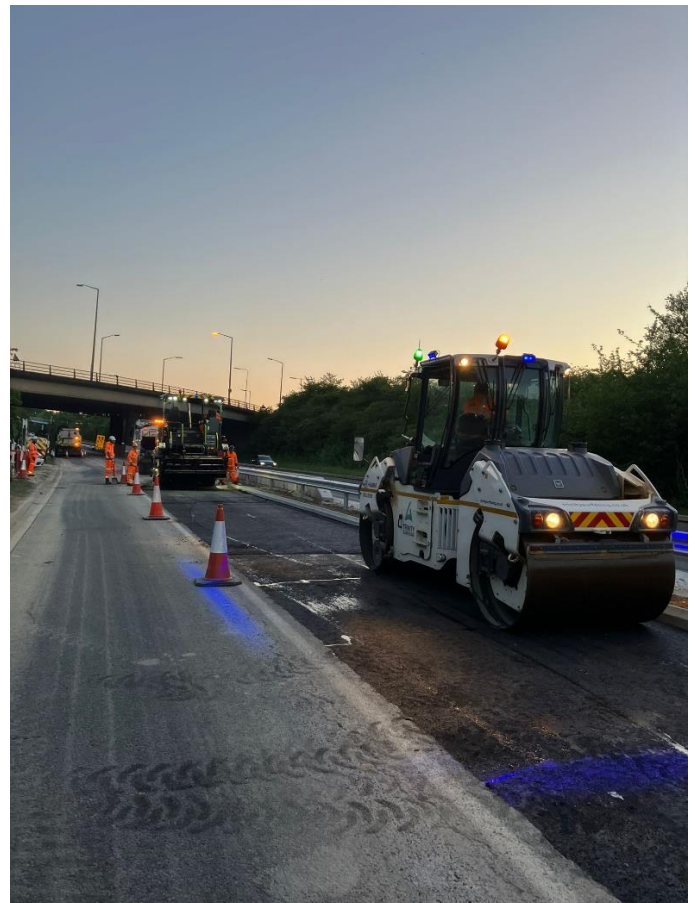
<https://nationalhighways.co.uk/A12markstey>



Material being excavated and loaded, to be taken away and recycled



New base layer installation in hard-to-reach areas during our recent weekend works.



New temporary surface being laid during our weekend works on the A12 southbound.

Traffic control



Drivers are encouraged to use all lanes on the approach to the roadworks to maximise the flow of traffic and reduce congestion.

This can help significantly reduce the overall length of queueing traffic and the risk of disruption and tailbacks at junctions.

We're also aware of the concerns raised by local residents regarding some motorists using smaller, local roads to avoid the A12. Not only do local roads have lower speed restrictions, they also aren't meant for large vehicles or high volumes of traffic, and they often have weight restrictions in place. It can also lead to more congestion, increasing the risk of accidents for both motorists and pedestrians.

We have recently increased signage in the area, as well as the presence of our safety camera van to prevent speeding and 'rat running'. We're also continuing to work closely with local councillors, parish councillors, and Essex Police to consider further actions that can be introduced to prevent rat running and speeding through local villages.

With this in mind, we ask drivers not to 'rat run', as this can impact local communities.

SMS alert service

We've set up a free SMS alerts service to warn road users, via text message, of any incidents that occur within our roadworks on the A12 during peak travel times.

You can sign up for this service by sending your mobile number to: ConcreteRoadsEssex@nationalhighways.co.uk.

Please reference the '**A12 Marks Tey to Stanway SMS service**' in the subject line of your email. You can opt out at any time by contacting us at the same email address.

Tell us what you think

We'd like to hear what you think about the information we send to you.



Please spend a few minutes completing our online questionnaire, which can be accessed by scanning this QR code.

Alternatively, you can also complete the questionnaire by visiting: <https://forms.office.com/e/Fuibm0r7NJ>

Get in contact with us

If you'd like more information about this work, then please call the 24/7 National Highways Customer Contact Centre on 0300 123 5000, email info@nationalhighways.co.uk